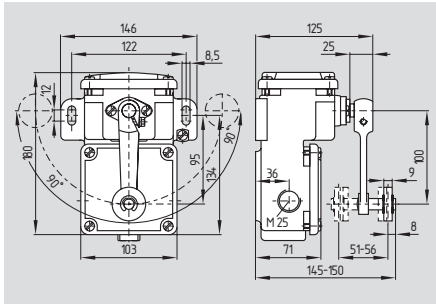


# Position and limit switches

## T/M 250



- Metal enclosure
- Slow action  $\ominus$ , change-over, 2 NC with double break or 4 NC
- Snap action, change-over contact with double break
- Switching mechanism can be set for switching to right, left or in both directions
- Blow-out magnets available to switch high DC currents
- 2 cable entries
- Protection class IP 67
- Actuating speed max. 3 m/s with an actuating angle of 30°  
Snap action: Min. 0.05 m/s  
Slow action: Min. 0.005 m/s

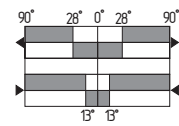
## Technical data

Standards: IEC/EN 60947-5-1  
 Enclosure: cast iron, galvanised, chromated, paint finish  
 Protection class: IP 67 to EN 60529  
 Contact material: silver  
 Switching system: slow and snap action, double break  
 Contact type: snap action: change-over contact, up to 250 V, with 2 galvanically separated contact bridges  
 slow action: change-over contact, up to 250 V, with 2 galvanically separated contact bridges, positive break NC contacts  $\ominus$   
 Termination: screw terminals M 3.5  
 Cable section: max. 2.5 mm<sup>2</sup> (incl. conductor ferrules)  
 $U_{imp}$ : 6 kV  
 $U_i$ : 500 V  
 $I_{the}$ : 16 A  
 $I_e/U_e$ : 4 A / 400 VAC  
 Utilisation category: AC-15  
 Max. fuse rating: 16 A gL/gG D-fuse  
 Contact opening: snap action: max. 2 x 2.5 mm  
 slow action: max. 2 x 2 mm  
 Switchover time: snap action:  $\leq$  35 ms  
 Bounce duration: snap action:  $\leq$  5 ms  
 Ambient temperature: -30 °C ... +90 °C  
 Mechanical life: snap action: 10 million operations  
 slow action: 5 million operations  
 Contact life: 10 million operations at 1 A / 400 V,  $\cos \phi = 0,4$   
 Switching frequency: max. 3000/h  
 Actuating speed: max. 3 m/s at 30°  
 snap action: 2-pole: min. 0.05 m/s, 1-pole: min. 0.005 m/s  
 slow action: min. 0.005 m/s

## Contact variants

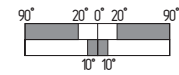
### Snap action

#### 1 NO / 1 NC

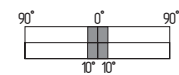


### Slow action

#### 1 NO / 1 NC

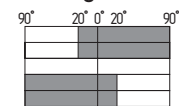


#### 2 NC



#### 2 NC left

#### 2 NC right



## Approvals

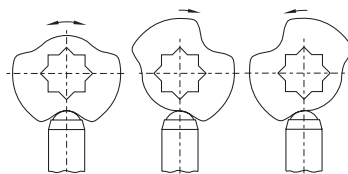


## Ordering details

①D 250-②z③-④-⑤

No.	Replace	Description
①	T	Slow action $\ominus$
	M	Snap action
②	11	1 NO/1 NC
	02	2 NC
	02/02	4 NC (2 right/2 left)
③	ü	Slow action with overlapping contacts
④	c	Magnetic blow-out
	r	Position latching 2 x 45°
⑤	k	Tropical version with ceramic insulation
	t	Tropical and temperature-resistant version
		-40 °C ... +200 °C
		Gold-plated contacts
		1276-2

## Note

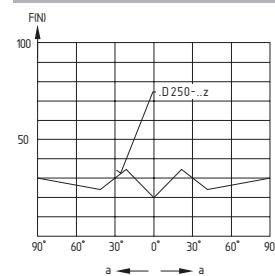


**Switching mechanism can be set** for switching to right, left or in both directions

### Position latching

Available with 2 x 45° position latching, suffix -r  
 Also possible with position latching: 2 x 30°, 2 x 60°, 2 x 90°, 1 x 45°, 1 x 60° and 1 x 90°

## Force-travel diagram



### Legend

F: actuating force  
 a: actuating travel

It is not possible to combine version with magnetic blow-out (Ordering suffix c) and temperature-resistant and tropical version (Ordering suffix t)