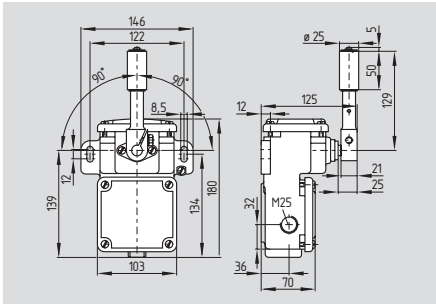
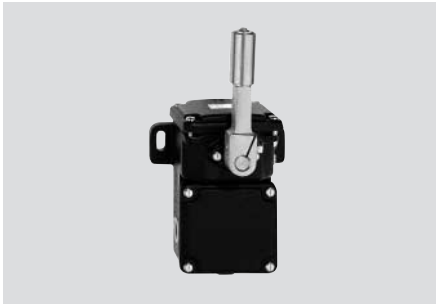


Belt alignment switches

T/M 250



- Metal enclosure
- Slow action, change-over contact with double break
- Slow action available with overlapping or staggered contacts
- Snap action, change-over contact with double break
- 2 cable entries M25 x 1.5
- Lever available with various lengths of roller
- Protection class IP 65
- Suitable for heavy duty

Technical data

Standards: IEC/EN 60947-5-1
 Enclosure: cast iron, galvanised, chromated, paint finish

Protection class: IP 67 to EN 60529
 Contact material: silver
 Contact type: snap action:

change-over contact, with 2 galvanically separated contact bridges

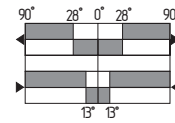
Switching system: slow and snap action
 Termination: screw terminals M 4
 Cable section: max. 2.5 mm² (incl. conductor ferrules)

U_{imp} : 6 kV
 U_i : 500 V
 I_{the} : 16 A
 I_e/U_e : 4 A / 400 VAC
 Utilisation category: AC-15
 Max. fuse rating: 16 A gL/gG D-fuse
 Contact opening: snap action: max. 2 x 2.5 mm
 slow action: max. 2 x 2 mm

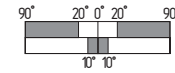
Switchover time: ≤ 35 ms
 Bounce duration: ≤ 5 ms
 Ambient temperature: - 30 °C ... + 90 °C
 Mechanical life: 10 million operations
 Switching frequency: max. 3000/h

Contact variants

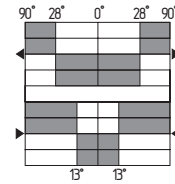
Snap action
1 NO / 1 NC



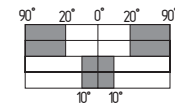
Slow action
1 NO / 1 NC



Snap action
2 NO / 2 NC



Slow action
2 NO / 2 NC



Approvals



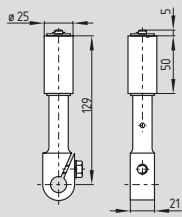
Ordering details

① 250-②z-③-④

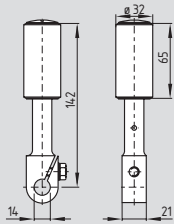
No.	Replace	Description
①	M.	Snap action
	T.	Slow action
②	11	1 NO/1 NC
	22	2 NO/2 NC
③	For the appropriate actuator: see page 1-157	
④	k	Tropical version with ceramic insulation
	t	Tropical and temperature-resistant version - 40 °C ... + 200 °C
	1276	Gold-plated contacts

Belt alignment switches

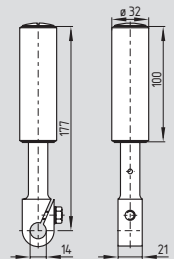
System components



Belt alignment lever 243



Belt alignment lever 966



Belt alignment lever 1224

Ordering details

Belt alignment levers

243	ordering suffix -243
966	ordering suffix -966
1224	ordering suffix -1224